

## PROGRAMMING Uniwell Touch Screens with PLM OR TENSAI

### Creating New Items

1. Open Programming software PLM or Tensai
2. Open your working file if it does not automatically open you can do this by going to File, Open and double clicking on the name of your file.
3. On the left hand side you will see a menu. At the bottom of this menu you will see the word PLU. Double click the word PLU

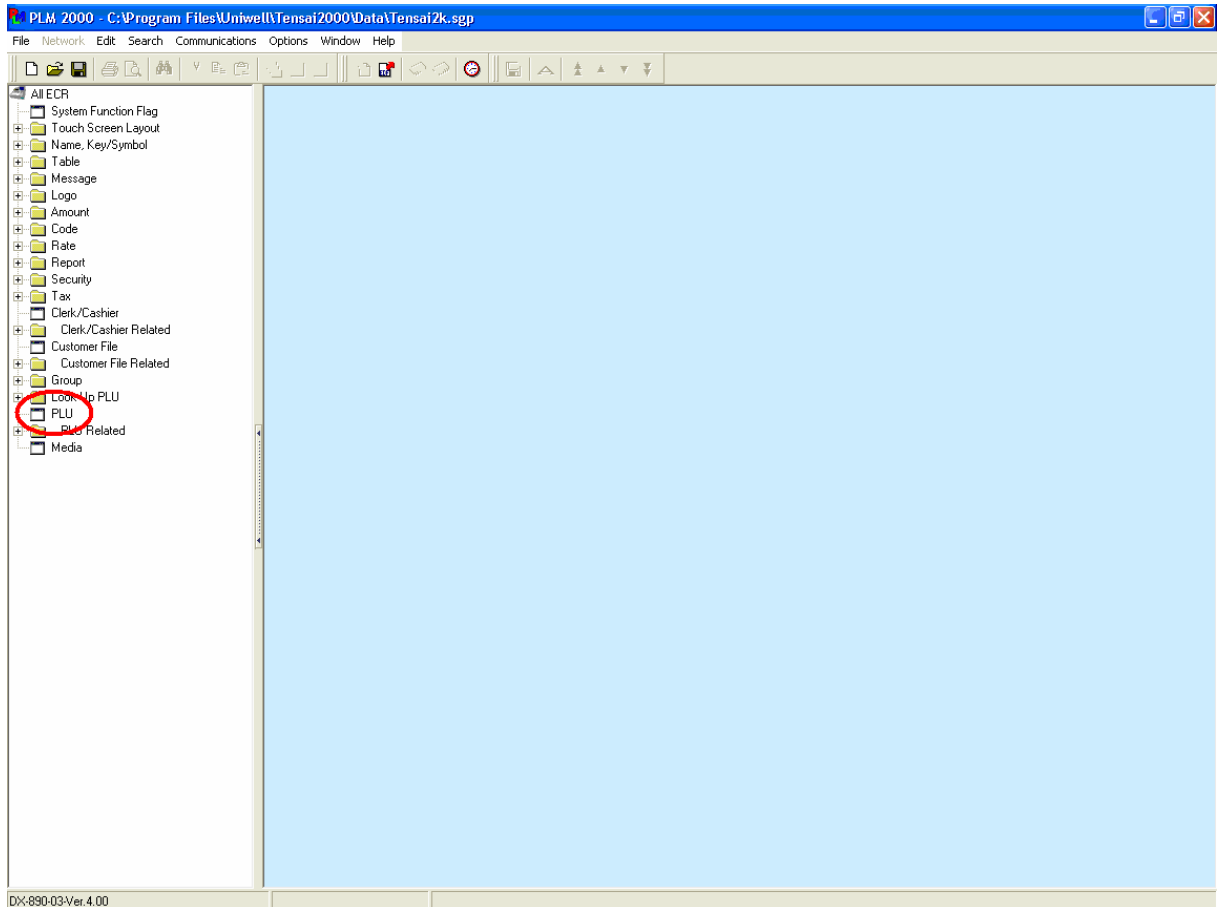


Figure 1

This is a “Table of Contents preview” for quality assurance

The full manual can be purchased from our store:

[https://the-checkout-tech.com/manuals/uniwell/DX programming using PLM software ma](https://the-checkout-tech.com/manuals/uniwell/DX%20programming%20using%20PLM%20software%20ma)

And our free Online Keysheet maker:

<https://the-checkout-tech.com/Cash-Register-Keysheet-Creator/>

[HTTPS://THE-CHECKOUT-TECH.COM](https://the-checkout-tech.com)